



iAN-SMARTLAB

Compact Gas Analysis On The Go

iAN-SMARTLAB brings the capabilities of a complete gas analysis laboratory into a self-contained, lightweight solution.

Perfect for quality checks and continuous real-time analysis of compressed breathable gases and gas mixtures, iAN-SMARTLAB complies with EN 12021 stringent standards, bringing unmatched convenience and reliability to diving sites, onboard vessels, shipyards, and more.

KEY FEATURES

Comprehensive Measurement Suite

The device measures flow, oxygen (O₂), carbon dioxide (CO₂), carbon monoxide (CO), helium (He), temperature (T), relative humidity (RH), volatile organic compounds (VOC), and dew point. Independent warning and alarm thresholds can be set for each parameter.

User-Friendly Display and Interface

A full-color graphical touchscreen displays all current measurements in real-time and allows users to monitor trends through built-in graphs.

Datalogging and Reporting

Continuous data storage in internal memory.

- Easy export via USB.
- Integrated printer for generating stickers or reports, complete with date, time, operator signature, and warnings/alarms for each parameter.

Flexible Gas Source Compatibility

- **High-Pressure (HP) and Low-Pressure (LP) Inlets:** Connect directly to any gas source (0 to 300 bar) without needing external pressure reducers, flow regulators, or flow meters. Ideal for testing compressors, diving cylinders, and storage systems.

Robust Design

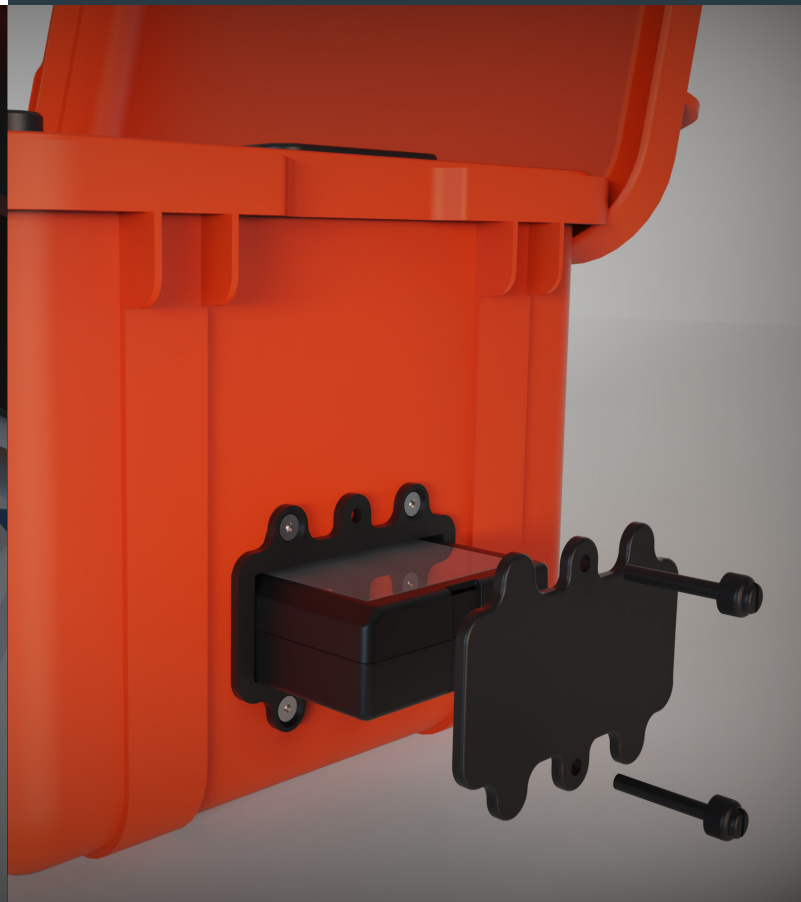
- Compact, lightweight case for easy transport. Easy export via USB.
- Dust and water protection of internal components, ensuring durability in tough environments.

Portable and Long-Lasting Power

- **Removable Lithium Battery Pack:**
 - 12-hour runtime on a single charge.
 - Rapid 1.5-hour recharge with the included desktop charger.
 - Swappable battery for extended use.
- **Wall Power Inlet:** Connect to any standard electrical socket during continuous operation.

Reliable and Low Maintenance

Drass-developed sensors are highly stable, requiring only periodic calibration checks with portable calibration gas bottles.



INNOVATIVE ADD-ONS

iAN-SMARTLAB includes several cutting-edge features:

- **Helium Analysis Included:** Perfect for diving-related applications (e.g., heliox or trimix mixtures).
- **Enhanced VOC and Dew Point Detection:** Improved precision ensures compliance with stringent safety standards.
- **Battery-Powered Portability:** The first fully portable compressed gas analyzer powered by a certified, long-lasting battery system.
- **Integrated High-Pressure Inlet:** Eliminating the need for external equipment by directly connecting to high-pressure compressors or storage systems.

WHY CHOOSE iAN-SMARTLAB?

iAN-SMARTLAB stands out as the first fully portable, battery-powered compressed gas analyzer capable of high-pressure operation.

It combines laboratory-grade analysis with unmatched versatility, performance and convenience, ensuring compliance with the most demanding standards for the enhanced safety of today's divers and operators.

PN: 97CE-04-05-08-00-00 / iAN-SMARTLAB